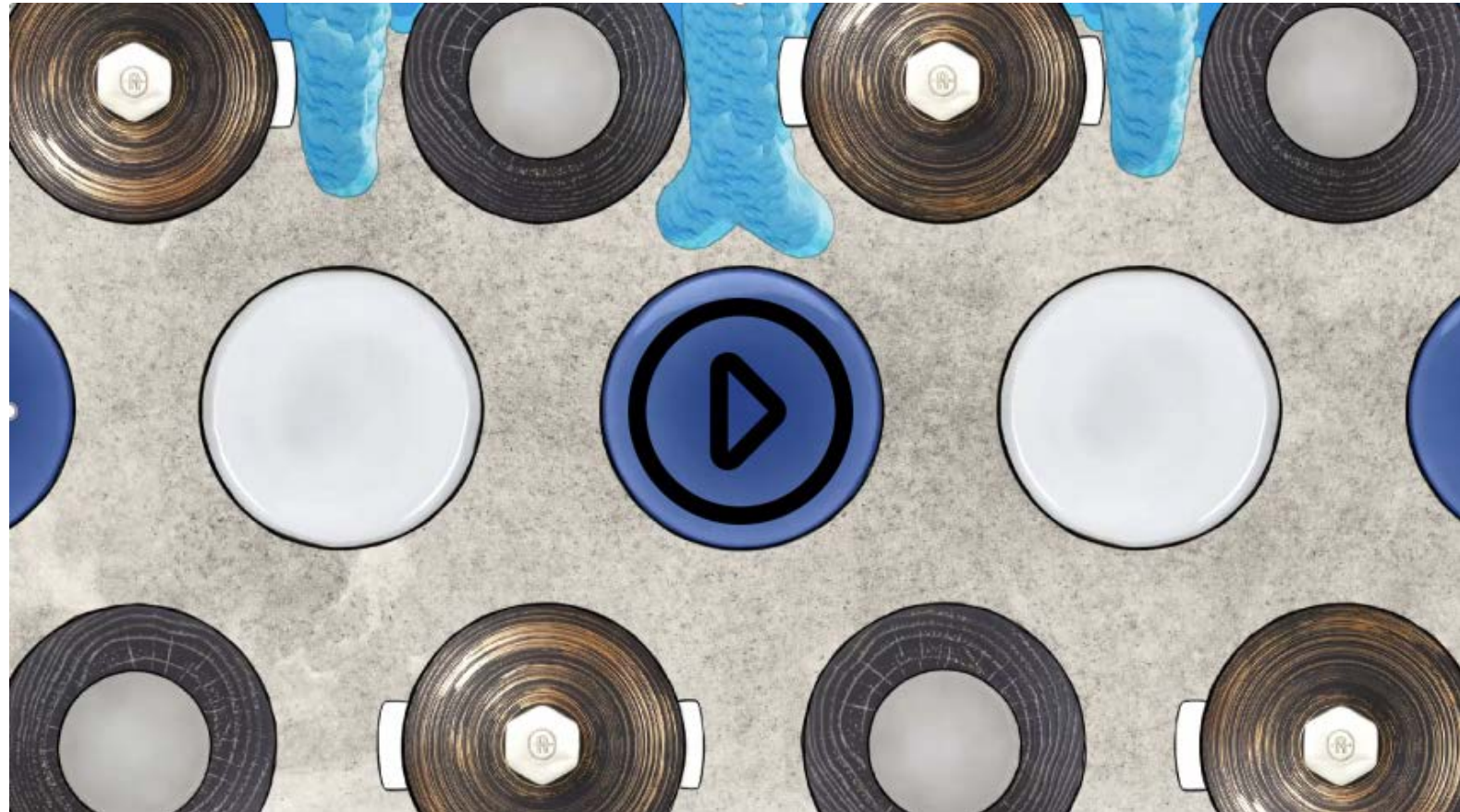


RECYCLAY
No.W COLLECTION

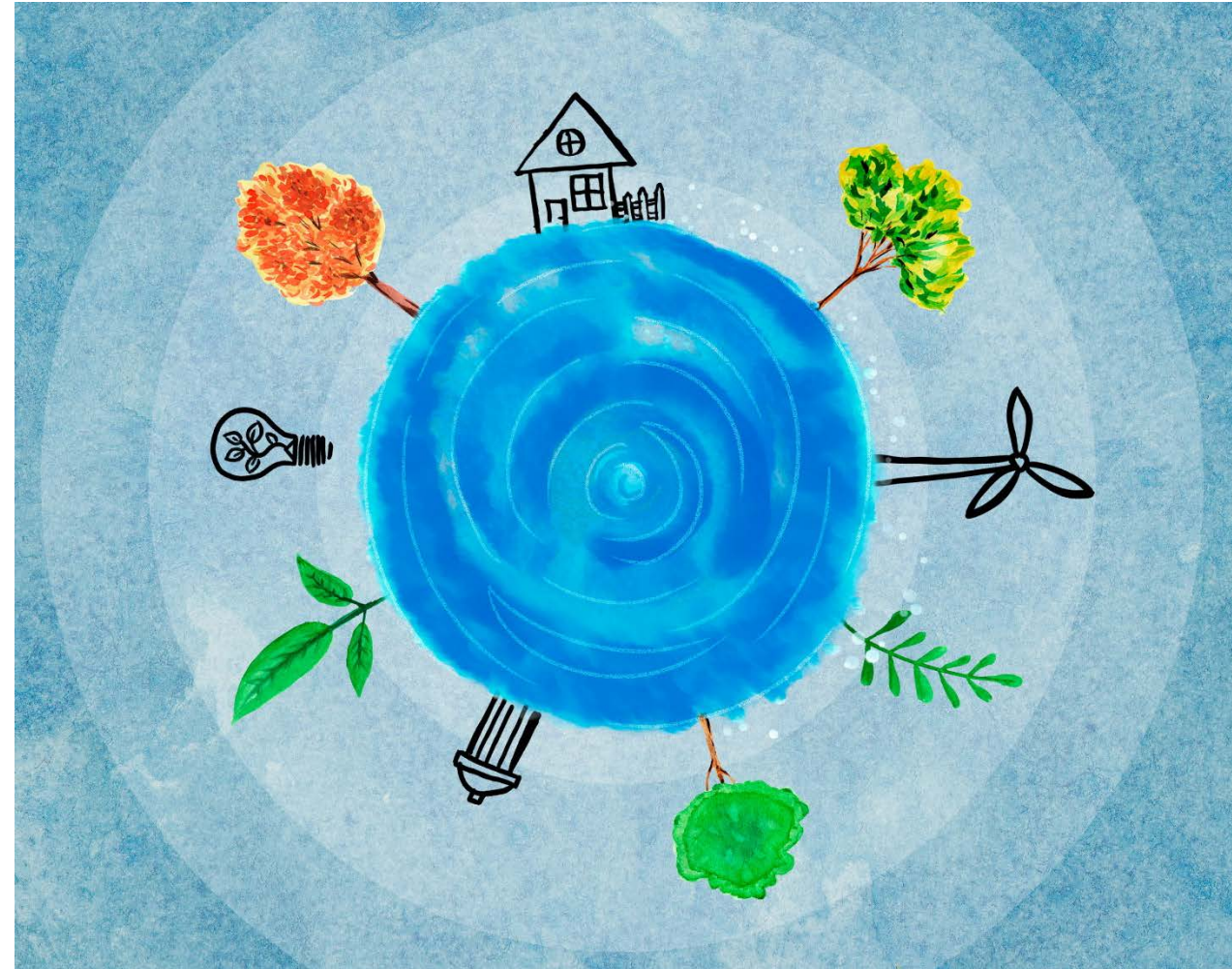
No.W COLLECTION ANIMATED MOVIE



REVOL'S GREEN PLEDGE

- Conserving the Earth's resources by:
 - Re-using our industrial waste water
 - Reducing the use of primary matter and water in our ceramics
- A revolutionary way of treating our industrial waste water: three years of development; patent applied for
- Pioneering work on innovative ceramics

Our pledge for 2020: to use 80 tonnes of industrial waste water in our process = 80 fewer tonnes of primary material needed.



RECYCLAY: THE EIGHT MAIN STAGES OF RE-USING OUR INDUSTRIAL WASTE



1

Every time a batch is produced, the operators clean their machines with water.



2

The dirty water from the cleaning process is collected.



3

This mineral-rich industrial waste water is taken to the treatment station.



4

The water is separated from the minerals suspended in it.



5

On one hand we have purified water that either put back into nature or re-use in production



6

On the other we have a compacted mineral mass to sort and store according to its make-up.



7

Carefully selected batches of clay are put into a mill to create the new Recyclay.



8

Every piece made of Recyclay is marked with this symbol.

NEVER OR NO.W?

- No.W: the first collection of tableware made from recycled clay and enamels (Recyclay)
- Environmentally conceived: a simple, **durable**, **hand-made** range but also one of the most **robust and functional** for professional kitchens
- **From kitchen to table** (the same benefits as Revol's culinary porcelain)
- For everything from the **simplest dishes to fine dining**

NOW: a way of putting your eco principles into action via a meaningful collection



No.W: A COLLECTION DESIGNED ALONG ECO PRINCIPLES



The designer puts his or her own vision into the plate's design.



Hand-finishing gives the object soul and its own unique character.



Recycled enamel is spread in the plate in the right quantity to assure a random rendering.



The design works in tandem with the clay's natural deformations to ensure a maximum of best-quality pieces from the oven as well as perfect stackability.



3 colours, all recycled

No.W COLLECTION

- Products:
 - Deep plate Ø 21cm
 - 4 plates Ø 28.5cm, 25.5cm, 23.5cm, 21cm
 - Rectangular plate 33cm
 - Bowl Ø 17cm, 55cl
 - 20cl cup - set of two
 - 8cl cup - set of two
 - Recycled glass flaçon
- Finishes:
 - Matt grey Recyclay: the subtle greys of Recyclay
 - Arctic white: a light enamel through which the nuances of the clay can be seen
 - Indigo blue: a deep, intense enamel



CULINARY TRENDS: raw ingredients, healthy, responsible cooking and the discovery of new flavours



Tortilla



Tamal



Variations on zucchini



Stuffed peppers and chillis

CULINARY TRENDS: healthy and balanced breakfasts, new takes on classic dishes, subtle interplays of colour



Room service: Granola, fresh fruit and *fromage blanc*



Lemon and meringue dessert

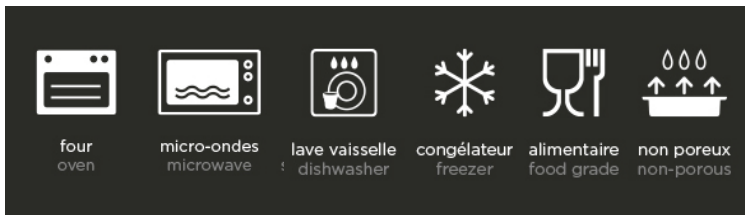


Fig tart

A PLEDGE TO PROFESSIONALS

The same benefits as other REVOL clays:

- Non-porous culinary ceramics
- Resistance to sudden impact
- A durable material, clean and healthy
- Natural variations in the clay yet good stackability and handleability. Each piece is unique.



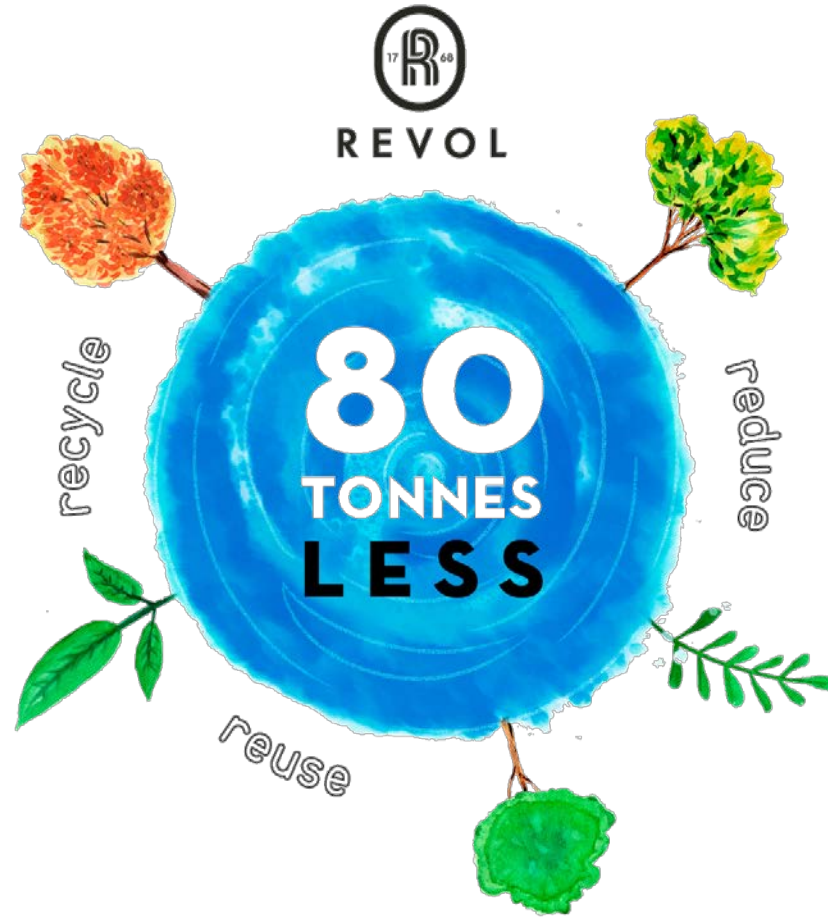
SUMMARY:

Revol is committed to conserving the world's resources

- o Revol is the first porcelain manufacturer to recycle its industrial waste water into a ceramic clay, **Recyclay**, which is endowed with the same technical properties as other Revol ceramics.

- o Our aim: To vastly reduce the use of water and primary matter in our production process.

Our pledge for 2020: to use 80 tonnes of our industrial waste water in production = 80 fewer tonnes of primary matter needed.



No.W, the first collection of tableware designed along ecological principles and from Recyclay recycled ceramics

- o Pieces designed with a potter's mind-set, guaranteeing products that are all different
- o Durable, hand-made pieces that are also robust and functional enough for professional kitchens
- o Three finishes in subtle, randomised colours: Matt grey Recyclay, Arctic white and Indigo blue, also created from recycled enamels

NOW: A way of putting your eco principles into action via a meaningful collection